

# AGING WELL



eugeria<sup>MC</sup>

CATALOG

## How do we select our products?

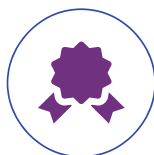
### THE EUGERIA PROMISE

At Eugeria, we are committed to improving the daily lives of seniors and simplifying the lives of caregivers. We accomplish this by carefully selecting each of our products according to a rigorous approach.

#### OUR VALUES



**Innovation**



**Dignity**



**Usefulness**



**Empathy**

We look for innovative products that combine science and technology that are useful in everyday life and that preserve the person's dignity.

#### OUR APPROACH



**Validate and test.** All of our products are tested by our team and by seniors in the community in order to fully understand how they work, but more importantly to validate the positive impacts they will have on seniors living with cognitive impairments.



**Understanding the needs.** Our team works closely with community stakeholders to understand the needs of seniors living with Alzheimer's disease.

#### ADAPTED PRODUCTS



Early stage



Moderate stage



Advanced stage



*Throughout the catalog, you will find the above labels to indicate products specific to a particular stage of Alzheimer's disease or another type of dementia.*

We are always looking for new products that improve the lives of loved ones and families affected by this disease at all stages.

QUESTIONS ABOUT A PRODUCT? CAN'T FIND WHAT YOU ARE LOOKING FOR?

GIVE US A CALL: 1 - 8 5 5- 5 5 4 - 3 7 4 2

## DAILY LIFE

• Calendar clocks.....	1
• Telephones.....	3
• Pill dispensers.....	5
• Meal and nutrition solutions.....	6
• Adaptive clothing.....	10
• Adapted gardening tools.....	11

## ENTERTAINMENT

• Simplified remotes.....	12
• Musical entertainment.....	13
• Robotic companion pets.....	15
• Intergenerational connections.....	16
• Adapted activity books.....	17
• Adapted games.....	20
• Adapted puzzles.....	21
• Adapted colouring activities.....	22
• Sensory objects.....	23

## HOME

• Fire hazard.....	24
• Wandering.....	25
• Risk of falling.....	27

## FOR RETIREMENT HOMES AND CARE FACILITIES

• A wide range of products based on needs.....	30
• The Famileo gazette.....	31
• The Tovertafel console.....	33

# DAILY LIFE

There are many products that can make life easier for a loved one living with a neurocognitive disorder. In this section, you will find products that help with orientation, eating, taking medication, and much more.

## What are the benefits of a calendar clock?

A common behaviour in the early stages of Alzheimer's disease is to keep asking what day or time it is. Using a calendar clock will go a long way in helping your loved one keep track of time.

While they have positive impacts for all seniors, these clocks are specifically designed for people living with Alzheimer's disease or another form of neurocognitive disorder. They help reduce your loved one's anxiety with a large screen and the well-lit display clearly shows the information they need.



Ideal for those in the early and moderate stages, these clocks allow for easy reading of the day of the week, date, and time. These clear markers are reassuring and help reduce anxiety while maintaining independence.



4.5 stars  
customer evaluation

*"...since she has been using her calendar clock, my mother is less anxious than before."*





**CALENDAR CLOCK**  
12 alarms



**CALENDAR CLOCK**  
8 alarms



**CLOCK**  
VISO 10



**ROSIE 2**  
Calendar Clock

## SCREEN

8 INCHES

8 INCHES

10 INCHES

Large numbers  
2 INCHES

## DESCRIPTION

Electric calendar clock  
which allows to set  
alarms

Electric calendar clock  
which allows to set  
alarms

Calendar clock that  
works with batteries

Calendar clock which  
allows to set pre-  
recorded voice alarms

## DISPLAY

- Day of the week
- Part of the day
- Time format 12-24h
- Date

- Day of the week
- Part of the day
- Time format 12-24h
- Date

- Day of the week
- Time format 12-24h
- Date

- Day of the week
- Time
- Date

## ALARMS

12 Duration: 1min

8 Duration: 30sec

N/A

25 Duration: 30min

POWER  
OUTAGE

The clock shuts down  
but programming is  
maintained

The clock shuts down  
but programming is  
maintained

Time is maintained,  
works with 2 AA  
batteries

Time is maintained,  
works with 3 AAA  
batteries

## LANGUAGE

- English
- French
- German
- Italian
- Spanish
- Dutch
- Polish
- Welsh

- English
- French
- German
- Italian
- Spanish
- Dutch
- Polish
- Finnish

- English
- French
- German
- Italian
- Spanish
- Dutch
- Polish
- Swedish

- Language of your  
choice for  
recorded  
messages by a  
loved one
- Menu in English,  
French, Spanish,  
German and Italian

## INSTALLATION

Table or wall

Table or wall

Table or wall

Table

## DIMENSIONS

21.7 x 17.2 x 2.5 cm

21.7 x 17.2 x 2.5 cm

28 x 19 x 2.7 cm

20.3 x 10.8 x 7 cm

## CHARACTERISTICS

Backlighting  
White or black frame  
Black and white screen  
for increased visibility

Backlighting  
White frame  
Colored screen

Wood color  
for a more  
discreet look

Options for sound  
intensity and brightness  
for the hearing or visual  
impairment

## PRICE

\$ 83.99

\$ 95.99

\$ 92.60

\$ 249.99

## CHOOSING THE RIGHT ADAPTIVE PHONE FOR YOUR LOVED ONE



Social contact is essential for the development and health of everyone. Opportunities to socialize tend to decrease with age, which could be due to individuals having a smaller social circle, the geographical distance of their children or the death of their spouse.

The telephone remains the preferred option for seniors as it is simple to use, inexpensive, and offers its users confidence and autonomy. However, it is important to consider the difficulties caused by hearing loss, visual loss, or cognitive decline.



**VTECH SN5127**



**VTECH SN5147**



**COMBINÉ VTECH**

KEYPAD WITH BIG BUTTONS/ CHARACTERS			
VISUAL INDICATOR FOR INCOMING CALLS			
PHOTO KEY	4	8	4
AMPLIFIED RINGTONE	+90 dB	+90 dB	
AMPLIFIED VOLUME FOR INCOMING CALLS	+50 dB	+50 dB	
TYPE OF PHONE	Wireless	Wireless and with a cord	Wireless
CHARACTERISTICS	Hands free Blocked numbers Answering machine	Hands free Blocked numbers Answering machine SOS Button calls 5 people Intercom between handsets	Remotely programmable Has to be used with VtechSN5127 or SN5147
PRICE	<b>\$ 99.99</b>	<b>\$ 129.99</b>	<b>\$ 42.99</b>

- Eugeria has selected adaptive phones with big buttons, loud ringtones, and programmable images for loved ones that allow seniors to use their phone as a way to communicate for a longer period of time.
- The adaptive phones are recommended for hearing loss, visual loss, and light to moderate stages of a cognitive impairment.

E-M



GEEMARC



CLARITY



SMPL



9

6

+30dB

+75 dB

3 Intensities

+4dB

+26 dB

+26 dB

With a cord

With a cord

With a cord

9 memory buttons

Contrasting colors

Suitable for hearing aids

Works when power is lost

Suitable for hearing aids

Answering machine

Works when power is lost

Contrasting colors

**\$ 64.99**

**\$ 72.95**

**\$ 76.95**

## ORGANIZING MEDICATION TIME

Managing multiple medications, at different times of the day, along with other daily life activities can quickly become overwhelming. Help your loved one with their medication with smart pill dispensers with compartments that organize pills neatly and provide reminders.



Tabtimer 8 alarms



Tabtime Super 8



Medelert

NUMBER OF COMPARTMENTS	NONE	8	28
NUMBER OF ALARMS	Up to 8 daily alarms	Up to 8 daily alarms	Up to 6 daily alarms
ALARM STYLE	Audio alarm and blinking LED light	2 audio alarms: -high 75 dB -low 60 dB A visual LED light alarm	3 audio alarms A visual LED light alarm
TYPE OF BATTERIES USED	1 AAA	CR2032	4 AA
CHARACTERISTICS	Magnetic (can be placed on the fridge) Loud and easy to read	Ideal for people with Parkinson's and Alzheimer's Easy to open	Can be locked Dispenses dose required at an exact time Ideal for advanced stages
PRICE	<b>\$ 34.95</b>	<b>\$ 38.95</b>	<b>\$ 135.95</b>

\*\* These products are reimbursed by some home care programs

\*\*\* Some pharmacists may fill the Medalert with their patient's medications.

## MAKING MEALTIME EASIER

Eating and nutrition are crucial to staying healthy. The cognitive and various sensory impairments of Alzheimer's may result in a variety of feeding issues. Here are some products to help make mealtime easier for your loved one.



### EATWELL

M-A

The Eatwell set offers tableware specially designed to let people, with Alzheimer's or other related diseases, eat by themselves in an independent way. The set is easy to manipulate, preventing spills, and improving nutrition.

#### CHARACTERISTICS

- The blue contrasting colour helps to distinguish food from tableware and to stimulate appetite.
- The design has been adapted for people suffering from tremors or osteoarthritis.
- Available in red and in yellow.



\*\*\*This product is reimbursed by some home care programs

### INDIVIDUAL ITEM PRICES

START AT **\$24.95**

SETS AVAILABLE

Contact us for more information

### DUO CUP HANDLE

Make your mug more stable by adding an extra handle.

#### CHARACTERISTICS

- Fast and easy to attach
- For straight-sided mugs with a diameter of 70 to 90 mm (3 to 3.5 in)

**\$ 16.75**





E-M



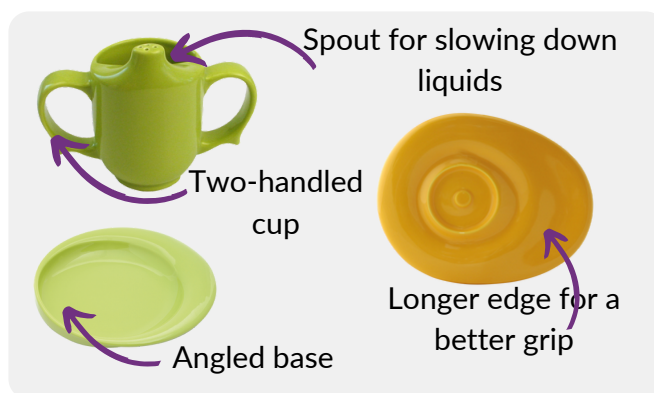
## DIGNITY BY WADE

A tableware set designed specifically to make mealtime easier.

The Dignity by Wade tableware was designed to let people with cognitive or physical impairments eat better by themselves! Colours and shapes were chosen for easier food manipulation, promoting independence.

### CHARACTERISTICS

- Available in yellow, white, and green: contrasting colours that help distinguish food
- Made from ceramic
- Shock-resistant for prolonged durability
- Dishwasher, microwave, and freezer safe
- Elegant and dignity-inspiring design



## INDIVIDUAL ITEMS AND SET AVAILABLE FROM \$18.50





## PLATZMAT

Setting the table has never been easier and safer for people living with dementia. With their high-contrast pictograms, these colourful placemats help people with dementia place their dinnerware by themselves.



## CHARACTERISTICS

- Anti-slip surfaces on both top and bottom of placemat
- 19 1/8 x 14 1/4 x 1/12 in
- Material: silicone rubber with single-colour printing
- Washable, long-lasting, and heat-resistant

**\$ 19.95**

NEW



## DROPLET: A SOLUTION TO STAY HYDRATED

Dehydration can be a problem for some seniors who live alone at home, such as Ellie's grandmother, the inventor of the Droplet®.

The Droplet® light and sound base is a smart, programmable base that talks to the user if they are not drinking regularly enough.

Pre-recorded messages (in English only) alert your loved one. You can also record your voice so your loved one feels more comfortable hearing a familiar, encouraging voice in their language.

## CHARACTERISTICS

- Includes: 1 mug (200 ml), 1 tumbler (200 ml), 2 flow control lids, 1 Droplet® Electronic smart base.
- Dishwasher safe (except the base)
- Volume from 1 to 4 - not suitable for people with hearing loss

**\$ 59.95**



## PROTECTIVE PASHMINA SCARF FOR ADULTS

The Care Designs Pashmina scarf keeps clothes clean and dry while eating, allowing your loved ones to stay elegant and chic.

### CHARACTERISTICS

- Available in 4 colours: pink dots, grey dots, burgundy dots, blue dots
- 34 x 48 cm (neck circumference: 34-52 cm)
- 3-layer design: waterproof back layer, absorbant middle layer, and fine soft microfibre front layer

#### VARIATIONS:



**\$31.95**

## PROTECTIVE CROSSED SCARF FOR ADULTS

The Care Designs crossed style scarf keeps clothes clean and dry while eating, allowing your loved one to stay elegant and chic. This practical scarf can be suitable for both men and women.

### CHARACTERISTICS

- 34 X 20 cm (neck circumference 40-50 cm)
- Thick absorbing middle layer, waterproof back layer

**\$ 28.95**





## THE BENEFITS OF ADAPTIVE CLOTHING

Discover Ovidis' innovative designs for easy and stress-free care assisted dressing.



Fashionable clothing, without compromise



Assisted dressing system makes dressing a "snap"



High-level functionality meets high-level aesthetics



Easy to wear and easy to care for. All styles are machine washable and dryable.



Quality materials for maximum comfort



Get **10% OFF**  
with code  
**EUGERIA10**

To see the complete collection and place an order, visit [en.ovidis.com/eugeria](https://en.ovidis.com/eugeria) or ask us for a catalog!

### Adaptive Camisole \$ 19.99

This garment is designed to preserve the dignity of the person when dressing by creating an extra layer of privacy. Unlike a conventional camisole, this one has push buttons on both sleeves, making it easier to put on.



Front



Back



Front



Back

### Adaptive Jumpsuit \$ 79.99

When a person is in an advanced stage of dementia, they can have a tendency to remove their clothing. This jumpsuit allows the person to remain clothed at all times, providing dignity and peace of mind for the caregiver.

\*You may be exempt from paying sales tax when purchasing adapted clothing if you have a prescription from your doctor.



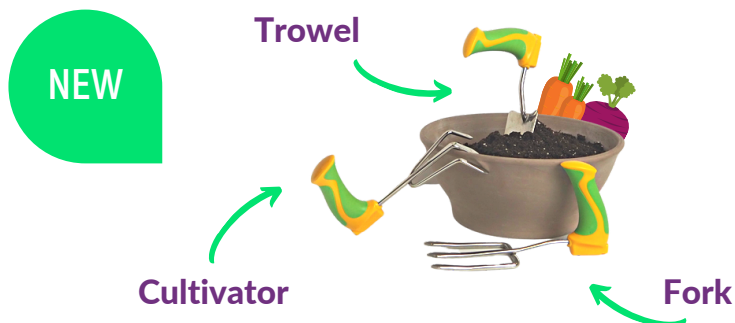
## PETA GARDENING TOOLS

## THE BENEFITS OF GARDENING

Gardening can improve the quality of life of an elderly person with cognitive or physical impairments by engaging in conversation but also by manipulating the elements.

The simple act of digging in the dirt can reduce agitation and anxiety.

Gardening therapy and horticulture can calm anxious people and reduce stress. Gardening activities can also be adapted to any stage or condition.



**\$ 26.95** each

**\$ 69.95** set of 3

## TIPS FOR USE

The tools can be used indoors or outdoors, individually or in groups.

**Indoors:** for people in the advanced stages, it is possible to use other materials other than soil to avoid risks (putting in mouth, dirtying, etc.) and still allow them to participate in the activity.

**Outdoors:** allow people to use the tool they feel most comfortable with, to encourage them to participate in the activity.



## USEFUL FOR



Person with weak hand control



Person with limited grip



Person with a visual impairment



**\$ 15.95**

## THE CUFF

Extra support for you and the user.

- For people with tremors or other motor disorders, this tool provides support and strength to the forearm.
- For people with memory loss, it helps keep the main tool in hand and not misplace it.



# ACTIVITIES AND ENTERTAINMENT

Adapted solutions for seniors. Products to entertain, break social isolation, spend quality time with family, and bring comfort and joy to our loved ones.

E-M



## FLIPPER SIMPLIFIED REMOTE

Combine TV and cable/satellite remotes into a single device. The Flipper Simple Universal TV Remote works with any device equipped with infrared technology. It has 3 functions: ON/OFF, controls the TV volume, and operates CHANNEL.

## CHARACTERISTICS

- Requires 2 AAA batteries (not included)
- Works with infrared devices
- Program up to 25 channels in the remote so that your loved one only browses between their favourite channels
- Easy to program and sync to the TV and decoder

**\$ 55.00**

*"...Mom can finally, without difficulty, maneuver the controller to change her TV channels or control the volume."*



4.5 stars

customer reviews

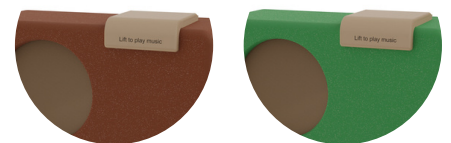
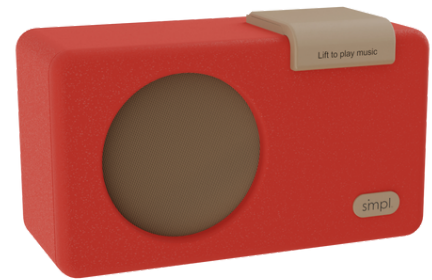
M-A

## SIMPLE MUSIC PLAYER

The Simple Music Player was designed to allow people living with dementia to play music with ease. It has been shown that music can have a positive effect on the cognition and lucidity of seniors living with cognitive impairments, especially when these songs remind them of happy moments. You can add music using the supplied USB cable and from a computer.

## CHARACTERISTICS

- Available in green, red and brown
- Retro design to resemble a vintage radio
- The volume is preselected on the back and can be changed with a pencil
- Holds up to 1000 MP3 songs
- Simply lift the lid to turn the radio on

**\$ 199.99**

E-M

## ADAPTED RADIO AND MUSIC PLAYER BY SMPL

Brighten up your loved one's days with their favourite music or radio stations! The radio function allows you to program your loved one's favourite radio stations. The music function allows you to store their favourite music on the device using a USB key (MP3 format) that's included with the radio.



## CHARACTERISTICS

- 26 x 16 x 15 cm ; 1.8 kg
- Also works with 6 C batteries (not included)
- Store up to 1000 songs
- Hidden configuration panel to control volume and stations.

**\$199.95**

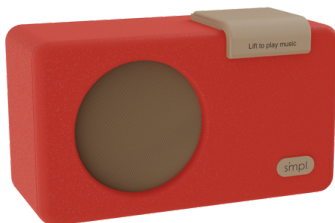
## RETRO-ERA RADIO - RELISH

This radio will bring back memories to your loved one with its design made to resemble radios of the retro era.

Its modern features such as the ability to put a USB key or record and view radio stations facilitate its configuration.

**\$ 149.99**

## HOW THESE PRODUCTS HELP OUR CUSTOMERS AND THEIR LOVED ONES



*"Mom is in the advanced stages of Alzheimer's disease and she handles the "music box" with ease. When I arrive to visit her at the unit and hear Elvis Presley's LOVE ME TENDER coming from the hallway, I know Mom is happy. The music has a calming effect. Wonderful music box."*

*"My mother loved music. This radio was the best solution when her CD player failed. It was wonderful that she had this radio to help her through the time of the pandemic, when she didn't understand what was really going on; it was a great companion. The other benefit is that the music plays continuously, so the care home staff doesn't have to deal with the CDs. We are really pleased and know that listening to music has given my mother some moments of happiness. Thank you!"*



*"We bought this cat for my sister-in-law who has Alzheimer's disease and we are very happy with her initial reaction when we gave it to her. It has become her best friend, she brings it everywhere she goes in the care home where she lives. She knows that it is not a real cat, but she takes care of it as if it were real. It has really changed her life, and she is much more serene now. Thank you Eugeria!"*

*"We gave the beautiful grey & white cat to my 87-year-old mother for Mother's Day. She cried tears of joy since she was so happy. We saw her almost fall back into childhood. Since then, she is proud to show it to people in her care home and she talks to me about it every day. A very good purchase. I recommend it."*

## SOOTHING ANIMALS



## JOY FOR ALL COMPANION PETS

Feelings of loneliness and isolation are more prominent in people living with dementia. Joy For All pets allow your loved one to feel less isolated and to enjoy their company without the hassle of caring for a real animal. They are robots designed with sensors to mimic the reactions of a live animal.

## CHARACTERISTICS

- Requires 4 x 1.5V alkaline C batteries (included)
- Ideal for people living with dementia who used to own a pet, and for isolated people living alone or in a care home or hospital where pets are not allowed.



THE CAT

- Available in 3 colours: orange tabby, silver with white paws and tuxedo
- Pet the back of its head or its back and it will move, meow and purr like a real cat!

**\$ 158.74**

THE DOG

- Reacts to petting, talking and moving
- Barks, sniffs, moves and has a heartbeat like a real dog!
- Freckled and Golden Retriever models available

**\$ 177.79**

THE BIRD

- Can be perched on the walking aids
- Looks, moves and sounds like a real bird

**COMING SOON**

## MANIMO WEIGHTED PLUSH ANIMALS

The Manimo heavy plush is a sensory soothing tool. It offers a calming effect thanks to its weight and also helps to stimulate the senses of touch and smell (by applying scents to the scarves).

## CHARACTERISTICS

- Available in 1 or 2 kg
- Cat, dog, and dolphin are available

**\$54.95** 1kg**\$64.95** 2kg**NEW**



## BRIDGING THE GENERATIONAL GAP



## FAMILINK PHOTO FRAME

The Familink is an easy-to-use, 3G connected digital photo frame. Pictures and text messages uploaded by your family instantly appear on the frame. The result is similar to a social media feed, but without the hassle of downloading an app or navigating a confusing menu. This 7-inch frame is the ideal gift to share photos in real time with your aging loved one not familiar with technology.

**\$199.90**

New



## FAMILEO NEWSPAPER

A personalized newspaper subscription that makes parents and grandparents happy and practically writes itself!

The whole family uploads photos and messages on the free app or on the Famileo website. Famileo takes care of the layout, prints the journal, and mails it to your loved one.

The subscription can be done for once, twice or four times a month. Discover the Famileo Box soon.

Contact us or visit [eugeria.ca/famileo](http://eugeria.ca/famileo) for more details.







## ⚡ Spark Your Mind

An activity book for people with dementia

**50+ activities & games** to entertain and provide cognitive stimulation

Useful for moderate stage of cognitive impairment, like Alzheimer's disease  
**Train the memory, laugh & reminisce!**

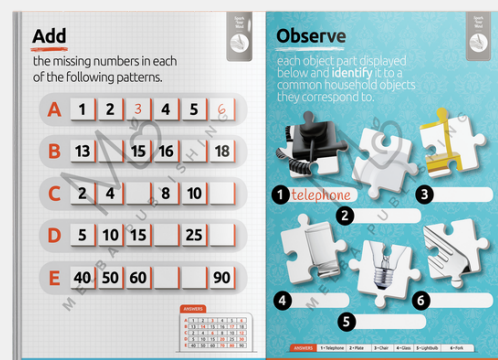
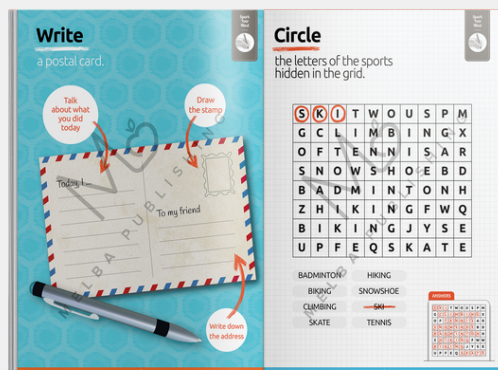
PUBLICATION : 2020

PAGES : 60

ISBN: 9782981601216

**\$ 18.95**

- ✓ Tested and developed with the help of **healthcare professionals**
- ✓ **Age-appropriate themes** (e.g., songs for the 40's and 50's)
- ✓ Activities of an **adequate level of difficulty** for moderate memory loss (to give a sense of accomplishment)
- ✓ Activities someone with Alzheimer's can do **by themselves** (on a good day), or with the **help of a loved one or caregiver**
- ✓ Conversation starter that encourages **social interaction and connection**

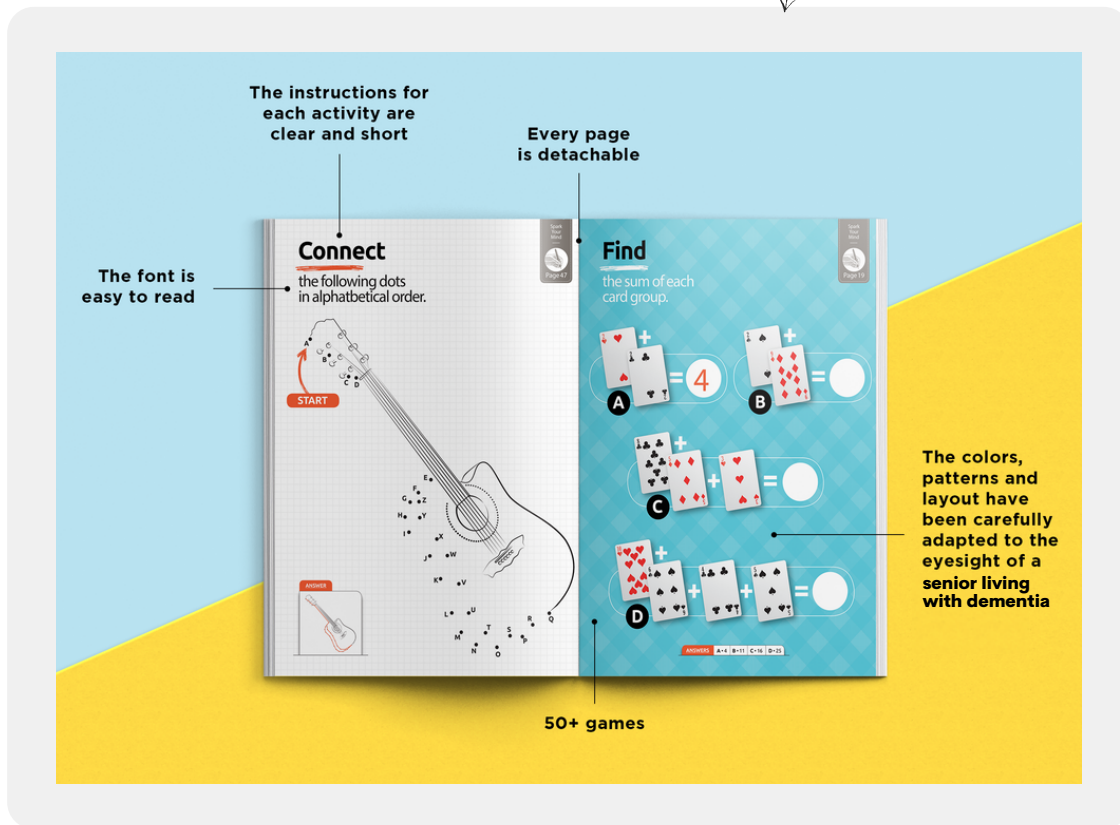


## ⚡ Spark Your Mind

An activity book for seniors living with Alzheimer's and other types of dementia

*Spark your Mind* is all about bringing fun, creativity, and laughter!

Take a look inside!



*Spark your Mind* offers a variety of activities and games including colouring, maze and memory games, connect the dots, crossword puzzles, and many more!

*The activity book is also available in PDF version for recreational therapists.*



**Marie-Pier Vaudry** is the author of *Spark your Mind*.

A few years ago, Marie-Pier Vaudry's mother was diagnosed with early-onset Alzheimer's. Marie-Pier struggled to find activities adapted to her mother's changing abilities. Marie-Pier spent the next few years working with healthcare professionals to create activity books.

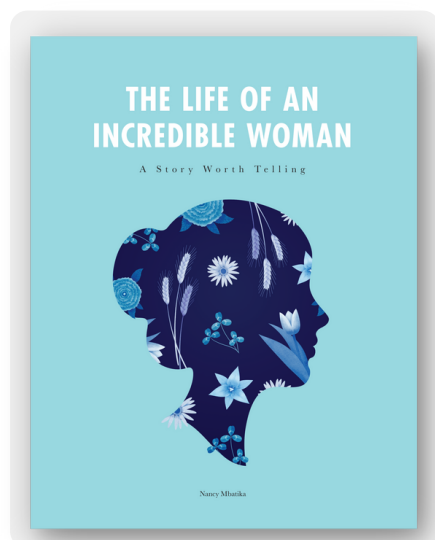
Also available in French



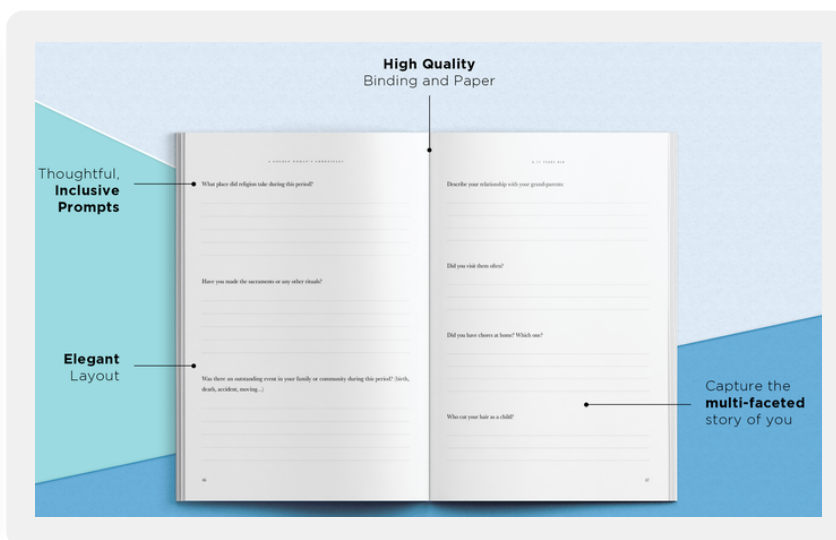
## LIFE OF AN INCREDIBLE WOMAN

### A story worth telling

The Life of an Incredible Woman: A Story Worth Telling is a **life story book for women**. From childhood to retirement, it covers family life, relationships, studies, careers, travels, historical events, and much more. This keepsake allows you to simply share small and big life moments, to write your story and share it with your loved ones or to keep those memories for yourself!



PUBLICATION : 2021  
PAGES : 241  
ISBN : 9782981558206  
**39,95 \$**



A **souvenir book** in a **question-and-answer format** to share your life story!

It's the perfect gift for your mother, grandmother, aunt, godmother, colleague, friend, or why not for yourself!

### Sharing life stories



Early on, **Nancy Mbatika** developed a passion for family stories. During a trip to the Congo, she discovered the power of storytelling from elders and the power of sharing knowledge. Her studies in linguistics and history revealed her passion for writing, while her studies in social gerontology solidified her mission of **providing a medium for storytelling**, especially for the well-being of seniors.

The success of her book and the power of her mission led Nancy to become a speaker and facilitator of **reminiscence workshops**.

## ADAPTED BINGO

Relish's Musical and Animal Bingo are fun, creative, and stimulating games that you and your loved one can play together. By using a CD of instruments or animal sounds and beautifully illustrated, age-appropriate images, instead of numbers, people in later stages of dementia are also able to take part in this popular game.

### CHARACTERISTICS

- 2 themes: musical and animal bingo
- 26 x 27 x 5 cm
- Up to 8 players plus an animator
- Includes: 8 bingo cards, 92 counters, bingo caller card, instrument or animal sounds CD (30 min), flipbook with instructions

**\$ 44.99**



## ANIMAL SNAP

A fun and stimulating game that you and your loved one can play. It's a product for people living with dementia that promotes independence and helps spark conversation. The aim of each game is to match the animal cards. For example, the memory game requires you to match two cards of the same animal.

### CHARACTERISTICS

- 13 x 9 x 1 cm
- The pack includes 3 games of different difficulty levels: Snap, Pairs and Full House
- 2 players
- 48 easy to clean laminated plastic cards



**\$ 14.99**

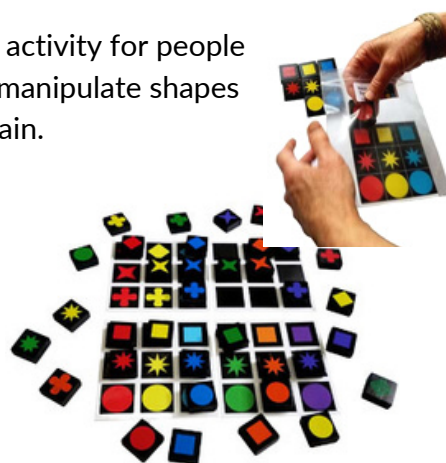
## MATCH THE SHAPES

The Match the Shapes game is an entertaining and challenging activity for people living with dementia or Alzheimer's. The colourful and easy to manipulate shapes and black tiles bring a cognitive challenge that exercises the brain.

### CHARACTERISTICS

- The pieces come in four groups with a different template for each
- The different colours and shapes can be adapted for any stage of dementia
- Comes with detailed how to use instructions for each set for an appropriate challenge

**\$27.00**





## ADAPTED PUZZLES

## RELISH COLLECTION

Did your loved one enjoy doing puzzles, but because of their illness, they can no longer complete them as easily as they used to?

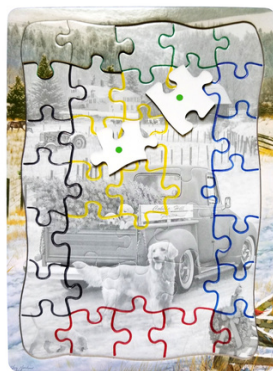
Relish puzzles are designed for people living with cognitive impairments and allow them to complete puzzles independently using a tray, giving them a sense of accomplishment and pride, as well as initiate conversation.

## CHARACTERISTICS

- Dimensions: 31 x 22 x 2 cm
- 3 levels of difficulty: 13, 35, or 63 pieces
- Each picture has been carefully selected to spark memories and start conversations
- 12 images available: visit [eugeria.ca/en/relish](http://eugeria.ca/en/relish) to discover them.



à partir de **\$24.99**



**\$24.00**

## KEEPING BUSY COLLECTION

Keeping Busy was founded in 2014 by the Canadian Donna Ray with the goal of providing the best possible care for people living with dementia.

Keeping Busy's method helps people for whom regular puzzles are difficult to complete successfully. It can bring a sense of accomplishment and satisfaction to the person who completes them. These puzzles also provide an opportunity to engage the person in conversation depending on the interest he or she may show during the activity.

## CHARACTERISTICS

- Size: 36 x 25 cm
- 35 pieces
- The pieces and templates are divided into six colour groups to help match the level of difficulty to your loved one's abilities and guide them
- 7 images available: visit [eugeria.ca/en/keeping-busy](http://eugeria.ca/en/keeping-busy) to discover them



## AQUAPAINT™ PAINTINGS

A stimulating, creative and simple activity to spend quality time with your loved one.

Relish's Aquapaint™ is a painting activity that simply requires the use of water and that can bring back that spark of creativity. This creative dementia product helps promote a sense of achievement and pride as well as stimulates conversation, stories and memories.



### CHARACTERISTICS

- Included: 2 brushes, 5 images per kit.
- Each painting is 27 × 21 cm
- Brush water on the canvas to reveal a painting.
- The canvas starts off blank with a simple black outline of the image to help guide the painter.
- When the water dries, the painting fades back to white and it can be used again.
- Carefully chosen images stimulate conversation once the painting is finished.

**\$29.99** per kit of 5 images

7 themes available:

- Classic vehicles
- Home comforts
- Home improvements
- Garden wonders
- Farm memories
- Wonderful animals
- Ocean life



## BiMoo - COLOURING TABLECLOTHS

**NEW**

The colouring fabric tablecloth is a product that can bring a moment of relaxation for your loved one. It simply requires washable markers and creativity. It can be a group or individual activity.

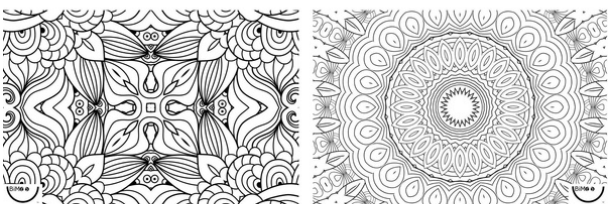
### CHARACTERISTICS

- To use with washable markers only (not included)
- 3 themes available: The Mandala, The Country Landscape and The Dream
- Machine washable, tumble dry
- 3 formats available:

Square 114 x 114 cm **\$39.95**

Rectangular 152 x 229 cm **\$59.95**

Placemat 30 x 45 cm **\$19.95**



## WOODEN SENSORY TOOLS - RELISH

A

The Fidget Widget™ will bring comfort to your loved one and help them relax. It was developed in collaboration with the Alzheimer's Society and the UCLAN for people living with dementia and Alzheimer's disease.



## CHARACTERISTICS

- 5 wooden sensory objects, each one built for a specific movement: turning, sliding, rotating, twisting and rolling
- Object manipulation can help improve dexterity.
- Can be used to increase engagement and provide stimulation

**\$ 99.99**

A



## SENSORY CUSHION

People living with cognitive disorders like Alzheimer's can often feel anxious or agitated. Moreover, people in advanced stages of the disease sometimes twist, rub or shake their hands. This cushion is adapted for people affected by dementia as it can help reduce anxiety and fidgeting. It offers different materials and textures to stimulate their senses.

## CHARACTERISTICS

- Handsewn by members of *Le Cercle des fermières du Québec*
- 16 x 16 in
- Sensory details: zipper, buttons, and pearls, tissues with varying textures, laces to tie.
- Sold without the cushion - cover only at **\$ 59.95**

**\$ 69.95** for the cover and the cushion

# A SAFER HOME

New technologies and more traditional solutions will help you secure the home. From wandering to fire hazards, see your options for securing the home in this section.

## FIREAVERT : SMART PLUG

E

Protect your loved one against fire hazards.

The FireAvert is a smart plug that connects appliances to the power outlet. The plug automatically shuts off the appliance to which it is connected when it hears the smoke alarm. It can be connected to any appliance, without the need for Wi-Fi.

There are two versions available:

- The FireAvert 110V for the microwave and other appliances

**\$ 219.95**

- The FireAvert 230V for the stove and oven

**\$ 224.95**





## SMPL™ ALARM KITS

One of the most popular products in Eugeria's catalog is the SMPL alarm kit.

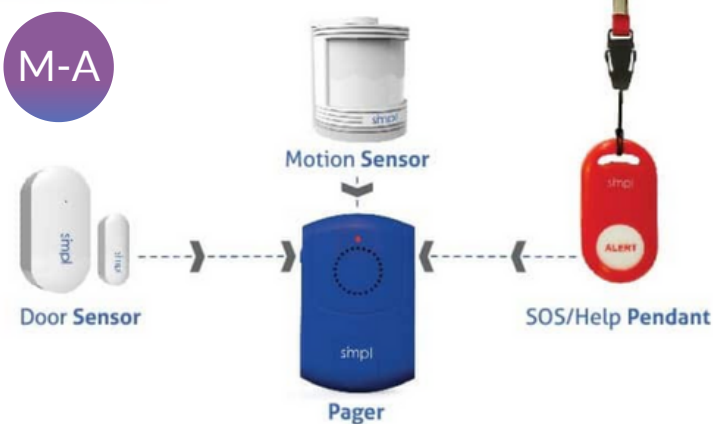
Simple to install, no Wi-Fi required and no monthly fees.

The SMPL alarm kit is a coveted solution for caregivers who live with a person at risk of wandering.

### How does it work?

Install the door and/or motion sensors in key areas (front door, bedside, etc.). The caregiver wears the pager on their belt. When the loved one triggers a door sensor, a motion sensor or pushes the help button on the pendant, the pager vibrates, flashes and beeps. Mix and match these products to get the right combination of sensors that fit your needs and home setup!

**simpl Alerts**  
Home or Business  
Alert System



**eugeria**™



### CHARACTERISTICS

- The pager vibrates, flashes and beeps no matter where the caregiver is in the home.
- Affordable solution with no monthly fee - uses energy efficient radio frequency technology.
- Wireless - designed for quick and easy installation, no tools required, double-sided tape included.
- Expand the monitored area with up to 20 additional sensors. Makes it easier for the caregiver.
- Works up to 250 feet indoors and 500 feet outdoors.
- Pager offers a selection of 52 ringtones. Ringing intensity varies between 25, 50, 75, or 100 decibels.
- 2 AAA batteries required for the pager.
- Battery life 6 to 12 months for door sensors and pagers.



### COMPLETE ALARM SET

Anti-wandering, fall prevention and emergency or help alerts. Includes: door, motion, SOS/help sensors and pager (1 unit of each)

**\$ 119.99**



### DOOR ALARM SET

Anti-wandering  
Includes: door sensor and pager (1 unit of each)

**\$ 54.99**



### SOS/HELP PENDANT SET

For emergencies or when assistance is needed. Includes: pendant with neck strap and pager (1 unit of each)

**\$ 59.99**



### MOTION ALARM SET

Anti-wandering in doorless areas  
Includes: motion sensor and pager (1 unit of each)

**\$ 74.99**

Additional motion sensor  
**\$ 24.99**  
each



Additional door sensor  
**\$ 39.99**  
each



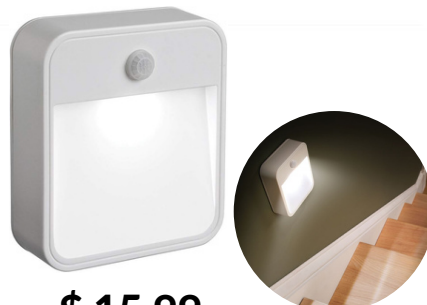
## FALL PREVENTION

When your loved one gets up at night to go to the bathroom or to walk, it can be a source of worry of falls. Here are some products for the home to help prevent falls and reassure you that your loved one is safe.

## LED MOTION SENSOR NIGHTLIGHT (20 LUMENS)

## CHARACTERISTICS

- 2.8 x 9.5 x 8.3 cm
- 4 AAA batteries, not included (turns off after 30 seconds of inactivity)
- Easy installation: mount or adhesive strips
- Detects movement up to 15 feet away



**\$ 15.99**



**\$ 13.99**

## SMALL LED NIGHTLIGHT WITH MOTION DETECTION (15 LUMENS)

## CHARACTERISTICS

- 2.3 x 11.3 x 4.6 cm
- 4 AAA batteries, not included (turns off after 30 seconds of inactivity)
- Easy installation: screws or adhesive strips
- Detects movement up to 10 feet away

## LED LIGHT WITH MOTION DETECTION AND DOWNWARD LIGHT (15 LUMENS)

## CHARACTERISTICS

- 2.2 x 10.8 x 6.1 cm
- 4 AAA batteries, not included (turns off after 30 seconds of inactivity)
- Light is directed downward
- Detects movement up to 10 feet away



**\$ 13.98**



**\$ 9.95**

## ANTI-SLIP SOCKS - OVIDIS COLLECTION

These socks were designed to be comfortable and with a non-slip sole to provide safety and traction when your loved one walks on smooth or slippery surfaces.

## CHARACTERISTICS

- Available in black and beige
- Mid-calf hem, silicone pads for an anti-slip effect
- 88% cotton, 11% nylon, 1% elastane
- Go to [ovidis.com/eugeria](https://ovidis.com/eugeria) for sizes available



## COMING SOON TO EUGERIA

We are always on the lookout for innovations and are committed to meeting your needs. This is why we will soon be adding several products to our offer:

### ANTI-WANDERING GEOLOCALIZATION SYSTEM

We are currently looking for and testing location tools. This product is frequently requested, but we have not yet found a GPS that meets our quality standards.



### SIMPLIFIED TELEPHONE



The telephone is a tool to facilitate communication with your loved one. As your loved one's illness progresses, it becomes difficult to manipulate or understand how a phone with multiple buttons works. We are currently researching and testing a simplified cell phone to avoid confusion and adapt to your loved one's situation.

### COMFORTING DOLL

Just like pets, having a doll can soothe and provide comfort to. We are currently evaluating the best doll options and solutions for your loved one.



### NEW SOLUTION FOR TAKING MEDICATION

We are currently developing a solution that will help you and your loved one manage medication intake more easily, as it can sometimes be a source of stress.



### FIND THE PERFECT GIFT FOR YOUR LOVED ONE!

Visit the gifts section of our website to please your loved one for a birthday, mother's day, father's day, grandparents' day or for the holidays!

## HOW CAN WE HELP YOU?

### Our offer for residences and care facilities

We are excited to announce the launch of our product line for residences and care facilities.

Our team works closely with stakeholders to fully understand the needs of older adults. Guided by our values, we identify, test and deliver the best solutions for you and your residents.

#### OUR VALUES



**Innovation**



**Dignity**



**Usefulness**



**Empathy**

For each of these needs, we look for innovative products that combine science and technology and are useful in everyday life, all while preserving the person's dignity.



We offer you the possibility of discovering our products through virtual or in-person presentations. Contact us at 1-855-554-3742 for more information.

## FOR THE KITCHEN

### FIREAVERT SMART PLUG

This tool was designed by firefighters in the United States to warn and prevent kitchen fires.

Linked to the smoke detector the Fireavert small plug shuts off the stove or electrical appliance when the detector is triggered.

*For more technical details see page 32.*



## FOR ENTERTAINMENT

### JOY FOR ALL PETS

These robotic animals help bring companionship and joy to people living with dementia. Joy For All comes in a variety of cat colours and puppies.

*See page 15 for details.*



## FOR MEALTIME

### DIGNITY BY WADE TABLEWARE

Beautiful dinnerware adapted for seniors and people living with cognitive disabilities and limited mobility to assist with nutrition. Wade's Dignity collection is available in many colours and designs.

*See page 7 for more details.*



## SPARK YOUR MIND

Activities adapted to people living with moderate Alzheimer's disease. The activity book is also available in PDF version for recreational therapists.



Great stimulating activities, ideal for individual or group activities.

*See page 17 for more details.*

## TO KEEP THEM SAFE

### SMPL DETECTORS

To prevent falls and wandering, see SMPL sets on page 25.

### GPS SYSTEM

We are working hard to find the ideal geolocation system for seniors. *Contact us for more details.*



## The family newspaper that makes grandparents happy

A paper gazette that shares your family news, that will only require a few minutes of your time each week, and bring lots of joy!

**Share the little moments of your life with your grandparent in a few simple clicks**



1

Go to **famileo.com** or download the **Famileo app**.

Send messages and photos to your loved one from your smartphone, tablet or computer.

Invite everyone in your family to participate.

2

Famileo takes care of the layout.

Your messages and photos will be sent to your loved one in the form of a personalized paper newspaper.

**For your information, Famileo is totally private, without advertising, and does not use your personal data to give to third parties.**





## FAMILEO FOR RETIREMENT HOMES

### Personalized gazette

#### A personalized gazette for every resident

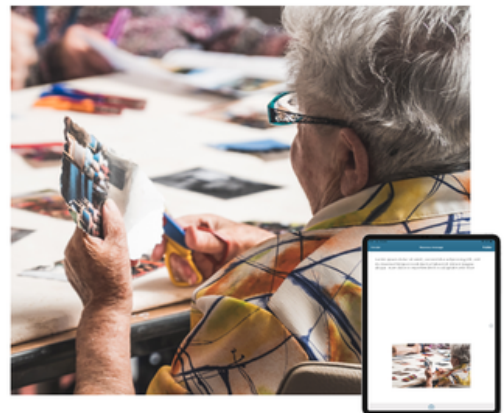
- ✓ The family shares photos
- ✓ The gazettes (newspapers) are printed every Monday at the establishment



### Retirement home wall

#### A simple way to share the daily life of the residents with their families

- ✓ Messages can be sent to all families or to a specific family
- ✓ Messages can include text and photos



### In-house newsletter

#### An internal newsletter to inform and entertain residents

- ✓ Created and printed by the facility's team (in less than 10 minutes)
- ✓ Can include photos, birthdays, games, poems and more

*"It's so easy for us to share photos with families and they really like it!"*

*It's important for residences to find innovative ways to engage families and keep residents connected with what's happening in their community and with their loved ones.*

*I can only say good things about the solution and the support we receive from Famileo."*

*Comment from a recreational manager in a residence using Famileo*

# New : the Tovertafel !

The Tovertafel is a **care tool that uses interactive play** to help soothe people with Alzheimer's or related diseases, to stimulate them cognitively and to create moments of joy.

***"The tovertafel is much more than a game! It is an innovative care tool that can significantly improve the engagement of your staff and the quality of life of your residents living with advanced dementia."***

*Valerie, Eugeria's president*

This interactive console projects vivid and crystal clear images, and engages the residents in such a way that they come out of their apathy, move around and have fun, which greatly contributes to improving their quality of life.

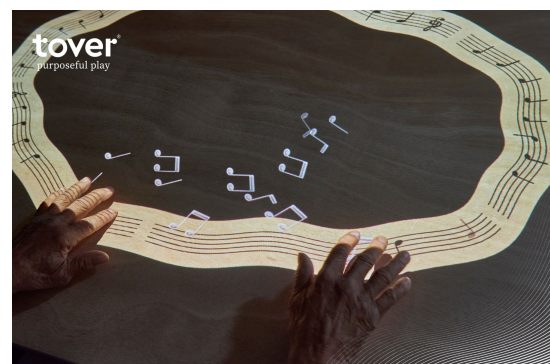
## Tover : the company

Tover is a company based in the Netherlands.

- Founded in 2014 by Dr. Hester Le Riche, Mathijs Konings, and Sjoerd Wennekes
- The Tovertafel is distributed in more than 10 countries worldwide
- Tover's approach to research, design and testing is remarkable.

The first Tovertafel is the result of research by Dr. Hester Le Riche.

This solution is built on research and co-creation with residences to stimulate people living with dementia and encourage them to be more active in order to improve their quality of life.



WOULD YOU LIKE MORE INFORMATION ABOUT THE TOVERTAFEL?

CALL - US 1 - 8 5 5- 5 5 4 - 3 7 4 2



# Effects of the Tovertafel

## For residents

- Breaks through apathy
- Increases physical activity
- Reduces restless and tense behaviour
- Increases social activity

## For healthcare workers

- Improves the relationship between care worker and resident
- Increases happiness at work
- Helps manage periods of restlessness
- Promotes bonding with the residents

## For families

- Increases the fun during visits
- Promotes the creation of intergenerational ties



## Technical characteristics

- The console includes a high quality projector, infrared sensors, a speaker and a processor
- The unit is wifi enabled, allowing for real-time game updates. Games can be played both offline (no wifi) or online (with wifi)
- A quick click system allows you to move the console within your facility

• Exclusive distributor of Tover

**eugeria**<sup>MC</sup>

## A WORD FROM OUR PRESIDENT

At the heart of our company, our mission is to improve the quality of life of seniors and people with dementia and related disorders, as well as to simplify the lives of their caregivers and the healthcare professionals who support them.

We are therefore very proud to introduce a new service offering for homes and care facilities. We now offer two world-class solutions.

Famileo breaks social isolation of seniors living in homes or long-term care away from their families. They receive a Famileo gazette with photos and messages from their families weekly.

Tovertafel is a scientifically proven innovation that provides cognitive and emotional stimulation to people with more advanced cognitive disorders by, amongst, bringing them out of their apathy.

Both of these solutions improve the quality of life for millions of people around the world every day, and we are fortunate to be able to offer them to Canadian seniors.

For caregivers, we continue to research innovative products and offer personalized support. Our team is available by phone (1-855-554-3742) or email ([info@eugeria.ca](mailto:info@eugeria.ca)) to answer your questions.

We are proud to put our expertise at your service by identifying, evaluating and organizing practical solutions to help you take care of yourself, your loved ones and your residents.



VALÉRIE LAROCHELLE,  
PRESIDENT





Innovating to improve the quality of life of seniors and people  
living with dementia

[eugeria.ca/en](http://eugeria.ca/en)



TELEPHONE: 1-855-554-3742

EMAIL: [info@eugeria.ca](mailto:info@eugeria.ca)

